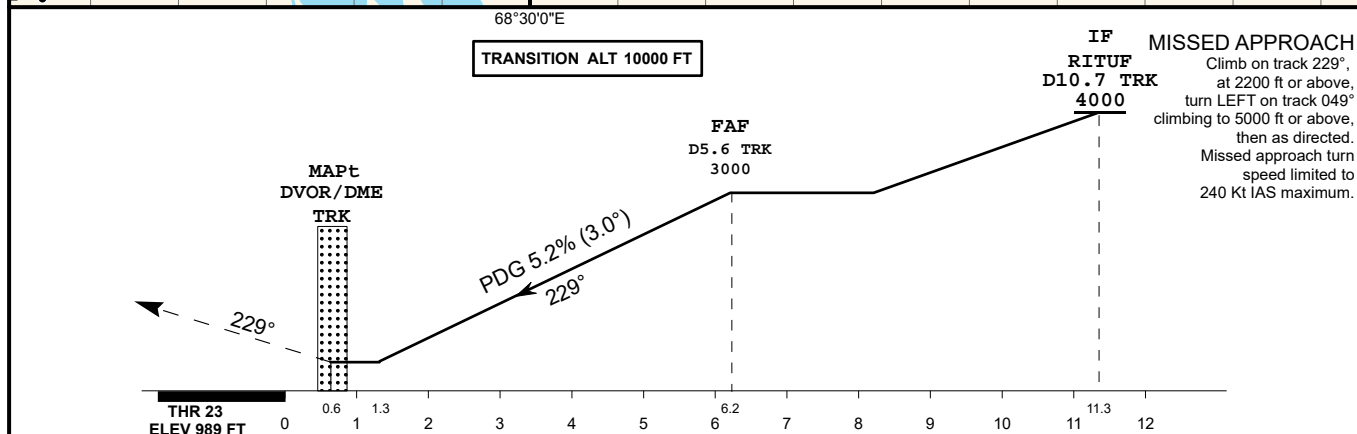
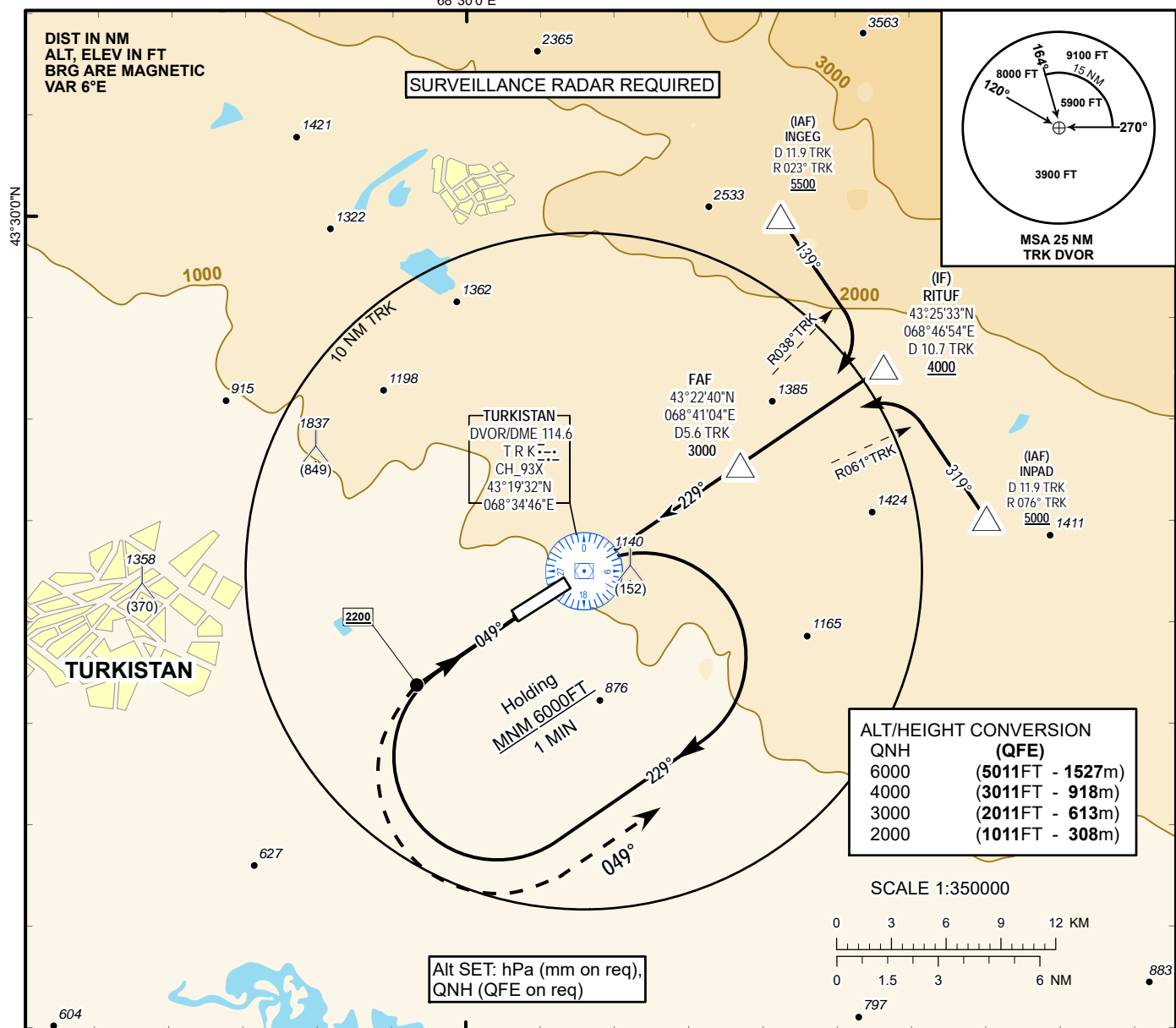


INSTRUMENT
APPROACH
CHART - ICAOAERODROME ELEV **989 FT**
HEIGHTS RELATED TO
AD ELEV
68°30'0"ETURKISTAN TOWER 131.3
TURKISTAN ATIS (EN) 124.4
TURKISTAN ATIS (RU) 118.3TURKISTAN
VOR/DME Y
RWY 23

Aircraft Category		A	B	C	D	DIST to THR	NM	6.2	5.0	4.0	3.0	2.0	1.0
Straight-in Approach OCA/H	VOR/DME	1470(480)	1470(480)	1470(480)	1470(480)	DME TRK	NM	5.6	4.4	3.4	2.4	1.4	0.4
						ALTITUDE	FT	3000	2630	2312	1993	1675	1356
						HEIGHT	FT	2011	1641	1323	1004	686	367
Aerodrome Operating Minima MDH ft x RVR(CMV)						GS	Kt	80	100	120	140	160	180
						Desc Rate (5.2%)	ft/min	420	530	640	740	840	950
						FAF-MAPt	min:sec	3:45	3:00	2:30	2:08	1:52	1:40

CHANGE: New chart.

VOR/DME Y RWY23

AERONAUTICAL DATA TABULATION

VOR approach to RWY23 from INGE, INPAD, RITUF	
Fix/point	Coordinates
INGE (IAF) R023°, D11.9 TRK	43° 30' 01.0"N 068° 42' 43.6"E
INPAD (IAF) R076°, D11.9 TRK	43°21'05.6"N 068°51'04.6"E
RITUF (IF) D10.7 TRK	43° 25' 33.4"N 068° 46' 54.4"E
TRK DVOR/DME	43° 19' 32.3"N 068° 34' 46.1"E
(FAF) D 5.6 TRK	43° 22' 40.2"N 068° 41' 04.2"E
THR RWY23	43° 19' 10.27"N 068° 34' 01.98"E
Final approach descent angle is 3.0°	